

## AQUA JOGGERS

Fit up to 48" waist (36" for Junior). High buoyancy foam water exercise belt. Adjustable elastic waist band to secure proper fit. Holds you stable and upright in deep water. Instructions included.

### Classic

(Blue, Purple)

**600400**

**\$44.95/\$41.95 12+**

### Pro Extra Buoyant

(Blue)

**600401**

**\$55.00/\$49.50 12+**

### Junior (Blue)

Ages 3-12;

Supports up to 95 lbs.

**600399**

**\$26.95/\$24.25 12+**



## Kieffer Aqua-Cell Flotation Belt

Great for aquatic exercise or therapy. Use in deep water for working leg muscles. Durable heavy duty black stretch webbing with buckle. Approx 27" x 7" x 1 1/4" thick. Color: Blue.

### Aqua-Cell Flotation Belt

**652015 \$37.75 / \$33.95 12+**

### Replacement Belt (2" x 47")

**652010B \$8.95**

## Kieffer Mini Swim Belt

Compact 22" float with 48" adjustable strap. For adults and larger children. For basic water exercise, deep water running, or as a swim aid. 22" x 8" x 1 1/2" thick. Color: Blue.

**621019 \$29.95**



## Inflatable Swim Collar

Provides extra buoyancy for aquatic therapy, running and exercise.

Velcro® strap.

**620002 \$29.95**



## Adjustable Foam Collar

Sewn nylon zippered collar enables flotation adjustment for individual use. Holds head securely above water. For deep water exercise or flotation therapy. Quick release buckle strap.

**Adult Size: 23" x 15"**

**620009 \$39.95**

**Pediatric Size: 17" x 13"**

**620009P \$39.95**



## Neoprene Float Collar

Soft and comfortable collar provides extra buoyancy for flotation therapy and water exercise. Highest quality black neoprene filled with quick drying Styrofoam® pellets. Great for Bad Ragaz, spinal injury, or disabled swimmers. Quick release buckle strap.

**620003 \$23.95 / \$21.50 12+**



## Cushion Float Collar

Adult size collar provides maximum comfort and buoyancy for aquatic therapy, running and exercise. Super soft 2" foam holds head securely out of water. Quick release buckle strap. 14" w x 21" h.

**620008 \$39.95**

## Kieffer Extremity Float

Arm and leg floats can be used in horizontal and vertical positioning. Adjustable Velcro® closure. Soft EVA foam.

**810802 \$4.95 each / \$4.22 12+**



**3600C**

**4600C**

## Dolphin CHLOROBAN WATERSHIRT POLY

For guards, swim instructors, surfers, and all aquatic enthusiasts. Soft durable Chloroban fabric is 100% polyester and offers UV 50+ sun protection.

Colors: Navy, Red, Royal.

**3600C Short Sleeve size XS - XL**

**\$36.95 / \$33.25 12+**

**4600C Long Sleeve size XS - XL**

**\$49.95 / \$44.95 12+**



**818891**

## WATERSHIRT™ LYCRA

Stay warmer in pool or protect your skin from sun. Long sleeve turtleneck. Comfortable, durable Lycra. Wear alone or layer under wetsuit for added warmth. Female sizes XS-XXXL.

Male (cut slightly longer and broader in the shoulders) sizes S-XXXL. Color: Black.

**See page 41 for child size watershirt.**

**818891 Female: \$48.95 Male: \$49.95**



### Kiefer Deluxe Foam Water Dumbbells

Soft foam dumbbells are perfect for water resistance exercises to build upper body strength. Padded easy grip handhold and capped ends make this the ideal workout tool. Great therapy tool for those with arthritis.

#### Mini 12" bar

3 3/4" x 2 1/2" foam

**650613 \$18.95 pair**

#### Medium 12" bar

6" x 2 1/2" foam

**650614 \$19.95 pair**

#### Large 16" Bar

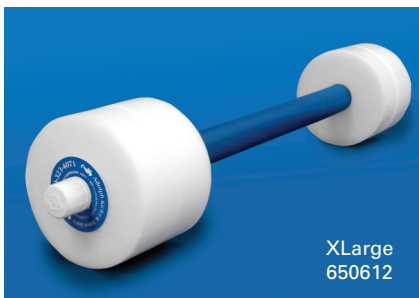
6" x 5" foam

**650615 \$25.95 pair**

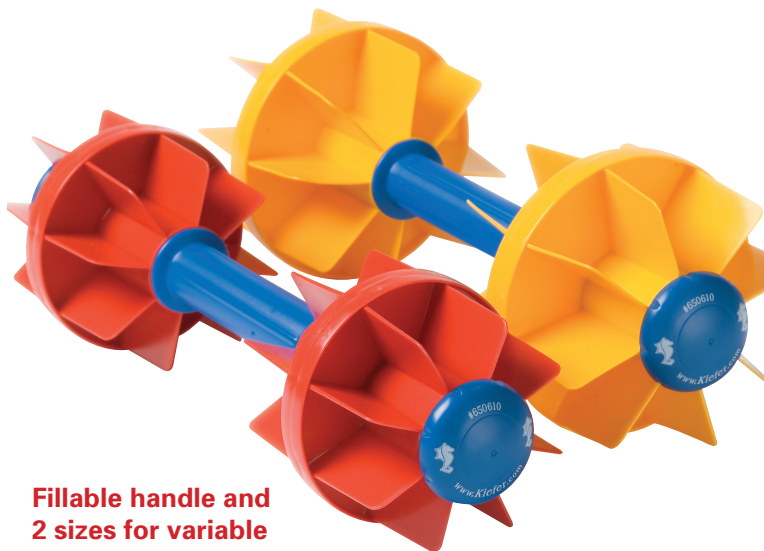
#### XLarge 30" Bar

6" x 5" foam

**650612 \$25.95 each**



**XLarge  
650612**



**Fillable handle and  
2 sizes for variable  
levels of resistance!**

### Kiefer Water Workout Dumbbells

Strengthen biceps, triceps, shoulders and core. By combining two Wave Eater™ racing lane floats with a lightweight handle, the turbo-reactive discs produce even resistance through all planes of motion underwater. Workouts can be tailored to any ability by adjusting speed of motion through water, increasing or decreasing resistance. Dumbbells are fillable, making them versatile for dryland training. Ideal for individual fitness, water therapy and water aerobics programs. 17" overall length. Choose Red 5" diameter floats for medium resistance or Yellow 6" diameter floats for heavy resistance.

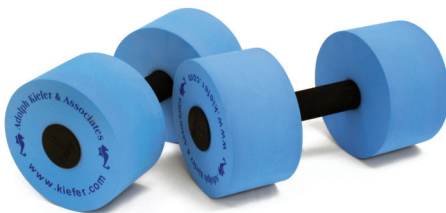
**650610 \$19.95 pair / \$17.96 12+**



### Kiefer Easy Grip EVA Dumbbells

13.5" slotted dumbbells offer easy, soft, molded EVA grip. Good for medium resistance rehab, general aquatic exercise, or those with arthritic hands that have trouble holding a standard dumbbell.

**621018 \$23.95 pair**



### Kiefer Basic Dumbbells

Use to strengthen or rehabilitate muscles underwater. Durable premier quality EVA foam disks on soft padded hand bar. 11" in overall length with 4 1/2" handle. Disks are 5 1/2" in diameter x 3" wide.

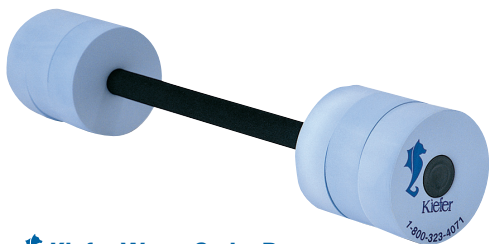
**650601 \$13.50 pair / \$11.95 12+**



### Kiefer Exercise Disc

Soft and buoyant premier quality foam hand discs with comfortable grip. Use for resistance underwater. Easy grip opening is perfect for those who have trouble with hand bar grip.

**650602 \$8.95 pair**



### Kiefer Water Swim Bar

Use for aquatic fitness to work both arms and legs or as a great learn to swim device (also known as a "kickstick"). Padded bar provides comfortable, slip resistant grip. Lightweight and easy to tote. Buoyant premier quality foam. 30" long. Ships oversize ground. Call for freight quote.

**650603 \$12.95 / \$11.65 12+**



### Kiefer WonderBoard

Designed by Jun Konno, world famous aquatic exercise innovator and coach, this unique V-shaped stability board is excellent for core and overall strength training and rehab. Sit, stand, or kneel to challenge balance, coordination and core stabilization. 20" x 13 1/2".

**801028 \$34.95**



### **WATER WALKER**

Designed for water running and resistance workouts. Great for cardio, building leg muscles, rehab, and fat burning. Instructions and mesh bag included.

**801200 \$59.95 pair**



## Kiefer Toys & Games

### Kiefer Water Noodles

Great for swim training, flutter kicking, water resistance exercises, water running or just floating around! Assorted colors. (Ship oversize if ordered in quantities of 12 or more. Call for freight quote.)

**Standard (58"l x 2.70" dia.)**

**650600**

**\$4.15 / \$3.75 6+ / \$3.05 28+**

**Wide (58"l x 3.90" dia.)**

**650591**

**\$6.95 / \$6.00 9+**



**Noodle Storage**  
page 42



### SLALOM SET

Brightly colored weighted bands float up for a "seaweed" effect. Create a swimmer slalom course with one or more sets. Includes four 55" long bands.

**641106 \$11.95**

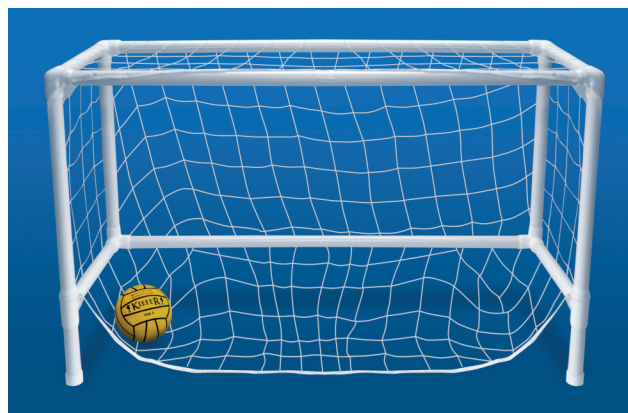


### EGG FLIPS

Teach beginner swimmers breathing techniques. Blow on egg at water level and it flips. 10 pack.

**651001**

**\$16.95 / \$15.25 12+**



### Kiefer Wet Ball™

Designed for use with YMCA Wetball water polo. Ideal for all ages. Sturdy PVC goal assembles easily. Includes one goal with stabilizer legs. Sits on pool deck. Long-lasting strong mesh. #3 Water Polo Ball sold separately. 60" w x 20" d x 28" h. Ships oversize ground. Call for freight quote.

**WPGWET \$143.95**

### Kiefer Dive Toys

Kiefer's brightly colored dive toys provide hours of water fun and help young swimmers build confidence in the water.

#### Dive Disk Game

**650593**

**5 pack**

**\$12.95**



#### Flexible 8" Seahorse Dive Sticks

**641101 4 pack \$7.95**



#### 5" Neoprene Dive Rings

Assorted colors and patterns.

**612303 3 pack \$11.95**



#### Tethered Dive Toys

**622195 5 pack** While Supplies Last.  
**WAS \$14.95 NOW! \$7.95**

## Kiefer Water Polo



### Kiefer Water Polo Balls

NFHS approved and meets AAU, USS, FINA and USWP regulations. Buffed finish for better grip. Sizes 4-5, official size and weight. Size 3 with soft finish.

**Size #5**

**606600**

**\$23.95 / \$21.55 12+**

**Size #4**

**606610**

**\$23.95 / \$21.55 12+**

**Size #3**

**606604**

**\$22.95 / \$19.95 12+**



### Kiefer Strength Training Weights

Great for all aquatic exercise. Clip together and use as a weight belt in water polo training drills to develop core and leg strength. Use only under adult supervision.

**811400**

**10 lbs (5 lbs each) ..... \$19.95 pair**

**7.5 lbs (3.75 lbs each) .... \$17.95 pair**

**5 lbs (2.5 lbs each) ..... \$15.95 pair**

**3 lbs (1.5 lbs each) ..... \$14.95 pair**

**2 lbs (1 lb each) ..... \$13.95 pair**



**600405**  
**Blue**

**600405**  
**White**

### Kiefer International Water Polo Cap Set

Durable polyester construction. Contrasting flatlock stitching. Numbered 1-21. Quartered goalie cap. Reinforced ear guards. Colors: Blue, White. **600405 \$199.95**



**600028**

### Kiefer Mesh Water Polo Caps

Excellent fit, highly durable chlorine resistant nylon mesh with reinforced seams, ready for the highest level of competitive play. Set consists of: two #1 red goalie caps, #2-16 white caps, and #2-16 royal caps.

**Set of 32**

**600028**

**\$325.95 set**

**Individual Cap (No. 1-30)**

**600028**

**\$16.95 ea.**





621004

### **Kiefer Learn To Swim Belt**

Three adjustable and removable floats on a strong nylon belt with plastic clip. Remove floats as child gains confidence and proficiency.

**621004 \$9.95**

### **Kiefer Swim 'N Play Kickboard**

Lightweight, soft yet sturdy EVA foam provides optimum buoyancy for swimmers of all ages and abilities. Great for team and recreational use. 18" x 11 1/2" x 1 1/8".

**600791 \$6.95 / \$6.25 12+**



600791



### **SWIM BUOY**

Soft cloth covered inflatable. One size-fits-all adjustable belt. Can be deflated as child progresses. Assorted prints.

**621002 \$19.95 / \$17.95 12+**



### **Kiefer Rock It Boat**

Foam swim trainer with padded handle. Aids in learning and perfecting proper position and effective kicking for front and back strokes. Mesh hammock helps beginners feel secure. Also great for pool play. 22"l.

**621009 \$15.95**



621009



### **WATERSHIRT™**

Comfortable, durable Lycra adds warmth and protects skin from sun so swimming and beach fun doesn't end early. Great for swim lessons. Short sleeve mock turtleneck. Wear alone or layer under wetsuit. Sizes: S=12-20lbs, M=20-40lbs, L=40-70lbs, XL=70-100lbs. Color: Black.

**818892 \$46.95**

## **Kiefer Kids Wetsuits**



### **Kiefer Kids Wetsuit**

Stop shivering with our soft neoprene "sweater" for the water. Velcro® shoulder straps. Size 1-2 yrs has Velcro® bottom for easy changing.

Sizes 2-4, 5-6, 7-8 yrs have front zip. Colors: Blue Camo, Pink Camo, Aqua Fish Print.

**685201 \$26.95 / \$24.00 12+**

### **Kiefer Kids UV Thermal Suit**

Sleeved suit provides added warmth and sun protection. Soft neoprene offers excellent mobility and added buoyancy. Sizes 2-4, 5-6, 7-8, 9-10.

Colors: Blue Camo, Pink Camo, Aqua Fish Print.

**685202 \$35.95**



### **Kiefer Swim 'N Play Trainer**

Builds child's confidence in water. Gives arms freedom to practice proper stroke technique. Remove individual floats as child becomes more confident. Four floats included on strong nylon belt with plastic clip.

**621003 \$9.95 / \$8.95 6+**



### **TYR THERMAL SUITS**

80% Neoprene/15% Nylon/5% Spandex. 50+ UV rating. Provides warmth. Sizes: 2T, 3T, 4T, 5T, 7/8, 9/10.

**KGTS2 Girls (Purple/Pink, Pink/Green) \$49.99 / \$40.00 12+**

**KBTSS2 Boys (Black/Red, Navy/Blue) \$49.99 / \$40.00 12+**



### **AQUA SPHERE SEAL MASK FOR KIDS**

For ages 4-12. Flexible frame and comfortable leakproof seal. Scratch and fog resistant UV protected lens. Kid friendly buckles for strap adjustment. 180 degree field of vision.

Colors: Clear lens with Blue, Clear, Lime or Pink frame.

**622035 \$18.95**







850101

### **Kiefer Rolling Equipment Rack**

Four adjustable shelves made with sturdy sliding PVC crossbars. Wheels allow for easy portability. 64" w x 24" d x 54" h. Assembly required. Ships oversize ground. Color: Blue.

**850101 \$254.95\***



### **Starting Block Safety Cover**

Cover your starting blocks when not in use. Large warning printed on blue heavy duty vinyl helps avoid accidents. Mesh venting and drawstring. 34" l x 27" w x 26" h. Universal fit.

**500610 \$49.95 each / \$44.95 6+**



See page 40 for Noodles.

### **Kiefer Rolling Noodle Storage Bin**

Holds approximately 50 noodles. Durable 2" plastic wheels. Sturdy furniture grade PVC construction keeps noodles upright and in place. 19" w x 19" d x 53" h. Assembly required. Ships oversize ground.

**600505 \$194.95\***



600515

### **Kiefer Equipment Caddies**

Store training or rescue equipment with our heavy-duty, all-steel wire construction caddies. Easy to move with multi-directional casters and large handles. Open grid design allows for viewing and drying of equipment. Lockable hinged covers. Simple assembly required. Ship oversize ground.

#### **Equipment Caddy Plus**

5' l x 2' w x 3' h with removable internal divider and two lockable hinged covers.

**600515 \$299.00\***

#### **Original Equipment Caddy**

36" l x 24" w x 34" h.

**600490 \$212.55\***



600490

\*Call for freight quote.

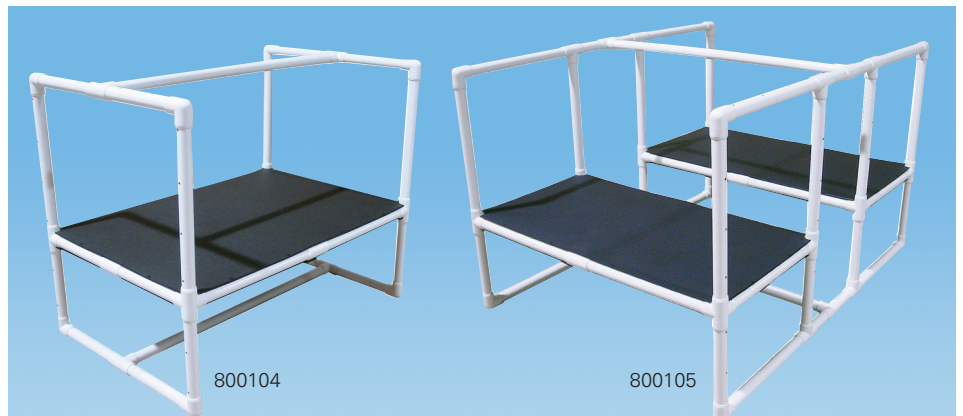
### **Kiefer Storage Bench**

Sturdy design features one-piece reinforced fiberglass and two removable dividers - strong enough to use as extra seating! White gel-coated exterior and painted interior. Safety chain lid and stainless steel lockable clasp for security. Bottom features 4 rubber feet and drainage holes. 85" l x 20" w x 18" h.

**600500 \$599.95\***



600500



800104

800105

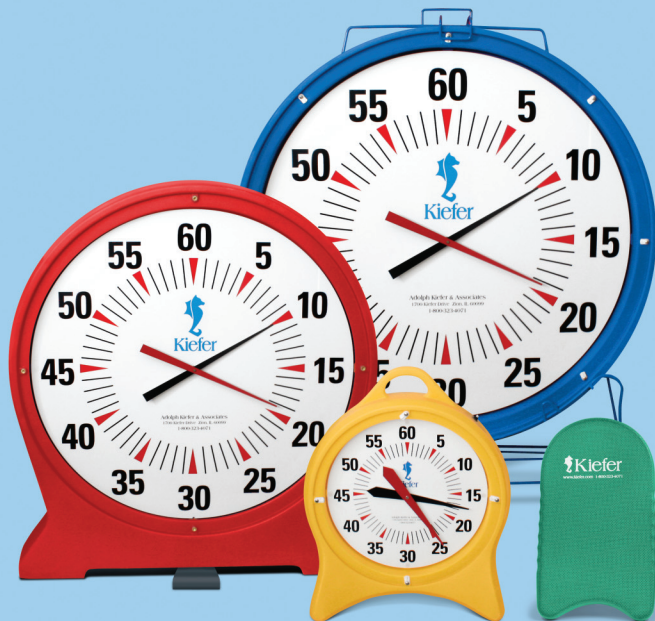
### **Kiefer Swim and Therapy Platforms**

Portable for easy pool installation and removal. Ideal for swim instruction, aquatic exercise, and therapy. Use for in-water seating, invert for 18" or 26" seat height. Use only when fully submerged in pool. Not intended for deck use.

Made from solid, rigid PVC components for lasting durability. Medium: 50" l x 32" d x 42" h. Large: 50" l x 66" d x 42" h. Assembly required. Ships by truck. Call for quote.

<b>Medium</b>	<b>800104</b>	<b>\$369.95</b>
<b>Large</b>	<b>800105</b>	<b>\$535.95</b>





Sturdy, molded polyethylene body. Plastic face with protective lens. Minute hand is repositioned through rear panel. Battery clocks use one C battery motor with convenient start/stop button.

**Kiefer Analog Pace Clock One Year Limited Warranty:** For a period of one year from invoice date, Kiefer will replace and reship any defective parts free of charge.

## Kiefer Pace Clocks

### 36" Pace Clock

Complies with USA Swimming's Technical Facilities Standards Rule 103.16 for viewable clock face size. Includes wheeled cart/stand. Also available in Wall Mount only version that includes wall mounting bracket (cart not included). Battery or electric.

Colors: Blue or Yellow.

### 31" Pace Clock

Portable or wall-mounted! Built-in recessed handle on back facilitates wall mounting. Stabilizing foot for stability on deck. Battery or electric.

Colors: Blue, Yellow, or Red.

### 15" Pace Clock

Manageable 22" h x 18" w x 4" d size.

Handle at top for portability. Battery motor only.

Colors: Blue, Yellow, or Red.

Pace clock replacement parts are available online at [kiefer.com](http://kiefer.com) or via the Kiefer call center at 800-323-4071.

\*Ships oversize ground. Call for freight quote.

**36" Electric Clock**  
210600 \$469.95\*

**36" Electric Clock Wall Mount Only**  
210600W \$399.95\*

**36" Battery Clock Wall Mount Only**  
210603W \$399.95\*

**36" Battery Clock**  
210603 \$469.95\*

**31" Electric Clock**  
210400 \$339.95\*

**31" Battery Clock**  
210403 \$339.95\*

**15" Battery Clock**  
210503 \$179.95

**8 ft Cord & Switch**  
Converts electric clocks for wall mount  
210426 \$44.95

**Electric Clock Motor**  
210412 \$79.95

**C Battery Clock Motor**  
210531 \$39.95



### Kiefer Lap Counter

Easy to see 12" numbers, heavy duty plastic and sturdy hinges. Use for long distance events, counts odd numbers 1-69 with orange for final lap.

600055 \$37.00 / \$33.30 6+



### Kiefer Diving Score Cards

Made from sturdy 9" x 4" plastic sheet, bound with coated wire. Scores 0-10 with 1/2 increments, highly visible 6 3/4" high numbers.

600047 \$10.50

### Kiefer 300 Memory Stopwatch

Split and lap time measurement, countdown/countup timer, normal time, pacer, speed and stroke/measurement functions. 300 memory. Water resistant. Measures up to 10 hours in 1/100 seconds. Large 3 row display panel.

680300 \$39.95



### SPORTCOUNT TIMER / LAP COUNTER

Convenient one hand operation for swimmers, coaches, and runners. Counts to 999 laps, takes split times during workout, and reports post-workout summary.

610100 \$31.95

### TYR Z-100

100 dual split auto memory, laps to 1/100 second, memory review - auto stop at last display, last-in-first out / first-in-first out memory review, locked memory after 100 splits, stroke frequency counter, time, date, calendar. Water & shock resistant. 1-year warranty.

LSW \$53.00 / \$42.50 12+



### Kiefer Meet Timer

Contemporary style; Event timing; Cumulative splits; 1-2 finish; 1/100 second precision; Calendar/time; Daily alarm; Hourly chime; Big digit display; Shock and water resistant; Includes neck lanyard. Colors: Clear, Yellow, Transparent Blue, Transparent Green, Red, Black.

610310 \$12.95 / \$11.50 12+



### ACCUSPLIT PRO SURVIVOR 601X

Cumulative split, split/release action, 1-2 fast finish, event/time-out, 24 hour timing. Alarm, time of day 12/24, day and date. 3-year warranty, no fail switches, water resistant. Translucent colors: Black, Blue, Green, Red, Yellow.

602101 \$17.95



### ULTRAK 495

100 dual split memory, large three row display, continuous event time display, memory recall during operation, gives splits within recall mode, stroke/frequency, measures to 10 hours, time and calendar, water resistant, 5-year warranty.

Colors: Black, Yellow

610495 Yellow \$44.95

610495B Black \$44.95



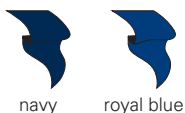


## Kiefer Custom Racing Flags

### Custom Vinyl Flags

Fabricated from long-lasting, heavy duty vinyl. Strung on heavy duty vinyl-covered stainless steel cable. Stainless steel tension springs and bronze swivel hooks on each end provide extra strength and prevent sagging. Lane numbers or custom lettering one side. 12" w x 18" l.

600808	<b>Pennants</b>	<b>\$4.25 per ft</b>
600801	<b>Custom Logo</b>	<b>Call for quote</b>
210210	<b>Extra Cable</b>	<b>\$0.89 per ft</b>
600802	<b>Letters or Numbers</b>	<b>\$4.25 each</b>
600803	<b>Replacement Pennants</b>	<b>\$3.25 each</b>



navy

royal blue



gold

yellow



kelly green

green



purple

orange

### Custom Nylon Flags

Heavy duty nylon flags sewn on nylon tape. No hardware necessary. Extra length of tape on ends for fastening. Recommended for outdoor use.

600124	<b>Pennants</b>	<b>\$4.25 per ft</b>
600123	<b>Custom Logo</b>	<b>Call for quote</b>
600122	<b>Letters or Numbers</b>	<b>\$4.25 each</b>



white

grey

black

brown

metallic gold

red

maroon

**Custom Order Information:** A completed schematic is required for all custom flag orders. Schematics are available for download at [www.kiefercustom.com](http://www.kiefercustom.com) or call customer service at **800-323-4071**. When ordering, please provide 1) pool width, 2) number of lanes, 3) distance from edge of pool to anchoring points, and 4) location of lane #1 (right or left when standing on platforms). Flags can be ordered in alternating colors to comply with U.S. Swimming, NCAA & FINA regulations.

### Stock Flags

Available in 45-foot and 100-foot lengths. Require no hardware or assembly. Extra 10 feet of tape on both ends for fastening. Nylon flags have a 12" separation between flags.

600120	<b>Nylon (45')</b>	<b>\$99.95 pair</b>
600060	<b>Plastic (45')</b>	<b>\$27.50 pair</b>
600062	<b>Plastic (100')</b>	<b>\$56.95 pair</b>



Kiefer Custom Vinyl Flags



Kiefer Stanchion &amp; Custom Nylon Flags

### Backstroke & Recall Stanchions

Sturdy support posts constructed of T-304L electro-polished stainless steel. Each furnished with chrome plated bronze eyebolt. Backstroke stanchions are 8'. Recall stanchions are 4'-6". Custom heights are available upon request. Stainless steel sliding collars and bronze slip anchors are sold separately.

#### Backstroke Stanchions

110765	1.90" O.D. x .065" wall	\$219.95
110761	1.90" O.D. x .109" wall	\$339.95
110764	1.90" O.D. x .145" wall	\$429.95

#### Recall Stanchions

110565	1.90" O.D. x .065" wall	\$149.95
110561	1.90" O.D. x .109" wall	\$225.95
110564	1.90" O.D. x .145" wall	\$259.95



### Sliding Stainless Steel Collar

Use with Kiefer stanchions (or any round 1.90" O.D. stanchion) to attach flags, pennants, cable, or recall ropes. Attach to collar with hook, reel, or slip knot. Height is quickly adjusted by hand.

**110193 \$39.95**



### Stanchion Anchors & Parts

**6" Bronze Slip Anchor (Body Only)**  
**700103 \$89.00**

**Lock Nut & Ring for 700103**  
**700103LN \$28.00**

**Cap Threaded for 700103**  
**700103C \$36.00**

**Key Wrench for 700103C Cap**  
**700103K \$13.50**





# Kiefer Starting Blocks



## Kiefer Surge

Seamless integration with Colorado Time Systems. RJP easily removed for storage. Houses cables and connections internally for a tangle free deck.



## Kiefer Exceptional

Single pedestal, rear-mount. Electro-polished stainless steel or custom powder coated pedestals in a variety of colors.



### OPTIONS:



## Kiefer Elite

Custom fabricated to your pool's specifications. Designed to conceal timing equipment including the deck plate. Custom powder coated in a variety of colors.



## Kiefer Competitor

Single pedestal, rear-mount. Powder coated pedestals in a variety of colors.



## Kiefer Genesis

Dual post, rear-mount. Posts powder coated in white. Thermoplastic top.



## When you choose Kiefer...

### You Choose Expertise.

Kiefer has over 50 years experience designing, fabricating and installing starting blocks, so you know your project is in the best hands. And because we handle the entire process at Kiefer, you will receive expert order management from a dedicated Kiefer consultant, every step of the way.

### You Choose Quality.

Kiefer blocks are quality blocks. Period. They are made in the USA from the highest grade materials including superior USA steel. Each is electro-polished or powder coated for a durable, corrosion resistant, and lasting clean appearance. Most importantly, your blocks will be custom designed to your pool and needs.

### You Choose Options.

Kiefer offers an endless number of body styles, features, colors, and logo customization options to match your unique program.

### You Choose Ease.

When you choose Kiefer, you will be assigned an expert order consultant who will see your project through from beginning to end and even beyond! (Kiefer consultants continue to follow-up with clients periodically after installation to ensure we have satisfied every need.)

### You Choose Flexibility.

Just like every pool is different, so is every client. You and your order consultant will customize your starting block design and develop a schedule to accommodate your unique situation.

**CHOOSE KIEFER NOW!**

**Call 1-800-323-4071**

and ask for Commercial Sales.



**100% USA MADE**  
using superior USA steel





**100% USA MADE**  
racing lane floats



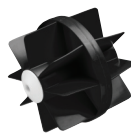
**FAST AND  
BUILT TO LAST!**

## Kiefer Racing Lanes

- Latest generation of advanced technology from the company that invented the racing lane
- Every float has an internal flotation chamber for maximum buoyancy
- Block up to 70% of wave energy
- Feature the industry's largest float sizes and maximum count of wave quelling fins for superior wave quelling
- Patented float construction technology
- Built to promote the highest levels of athletic ability and competition
- Tough polyethylene plastic with added UV inhibitors for extended durability

Kiefer racing lanes come fully assembled. Made from injection-molded polyethylene plastic. Hardware is stainless steel and includes vinyl-coated type 316 cable, spring end fitting, and take up reel. Solid color 5 yard or 5 meter sections at each end. Alternating colors by float in main body. Resurfacing markers at 15 meters available on request (specify color). Custom layouts are available.

### Standard Colors



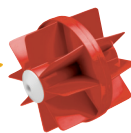
black



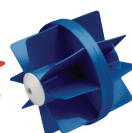
white



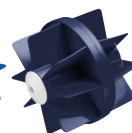
yellow



red

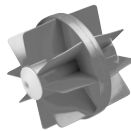


royal

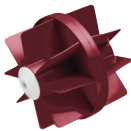


navy

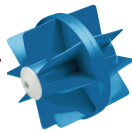
### Specialty Colors\*



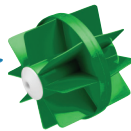
grey



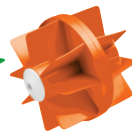
maroon



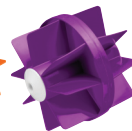
light blue



green



orange



purple

\*Require a 10% upcharge. Call for lead time.

### *The Fastest Pools Use Kiefer Lanes!*

Today Kiefer continues to build on Adolph Kiefer's revolutionary innovation. The patented Wave Eater and Advantage racing lanes are used in premier swimming events worldwide.

- 1996 Olympic Games
- 2000 US Olympic Trials
- 2004 US Olympic Trials
- 2007 USA Swimming Championships
- 2008 USA Swimming Championships
- 2009 USA Swimming Championships
- 2010 USA Swimming Jr Nationals
- 2011 USA Swimming Grand Prix
- 2011 USA Swimming Nationals

- 2011 USA Swimming Jr Nationals
- 2011 YMCA Nationals
- 2011 Duel In The Pool
- 2012 Grand Prix



**Kiefer Waves  
Goodbye  
to Waves**

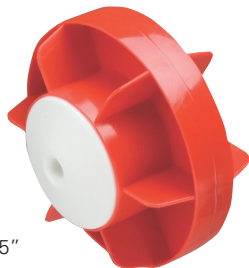


Waves are a naturally occurring force that pose challenges for all swimmers and pools. In 1946, Adolph Kiefer's Olympic swim coach asked Adolph to use his passion for innovation to devise a wave quelling solution to improve swimming athletic performance. Weeks later, Adolph noticed a candle on a restaurant table with a cylindrical covering crosshatched with holes. The candle's flame was calm and steady. Adolph wondered if a similar design could reduce wave turbulence. After careful modification and testing, Kiefer introduced the world's first anti-turbulence racing lane in the 1950s. This revolutionary invention has completely changed the way we swim in pools.

## Kiefer Advantage™ Racing Lanes

Beats the competition with 6 wave quelling fins for greater performance.

12.5%  
Larger than  
4" diameter  
lanes!



Diameter: 4.5"

### Kiefer Advantage™ I

A competitively priced float that delivers excellent wave quelling. Kiefer stocks 75' Advantage I lanes in alternating red, white, and royal floats for immediate shipment. Length: 2.75"

210360	60 Ft	\$349.95
210375	75 Ft	\$379.95
210325	25 M	\$399.95
210350	50 M	\$749.95
210333	Ind. Floats	\$1.60
210333C	Custom Length	Call For Quote

#### With Disconnects for Multiple Lengths

210236	25 M / 75 Ft	\$529.95
210352	50 M / 2 x 75 Ft	\$909.95



Diameter: 6"

### Kiefer Advantage™ II

*Used in the 2000 and 2004 Olympic Trials!*

Extra large float provides maximum wave quelling action. Length: 3.86"

210560	60 Ft	\$419.95
210575	75 Ft	\$484.95
210525	25 M	\$514.95
210550	50 M	\$929.95
210533	Ind. Floats	\$2.85
210533C	Custom Length	Call For Quote

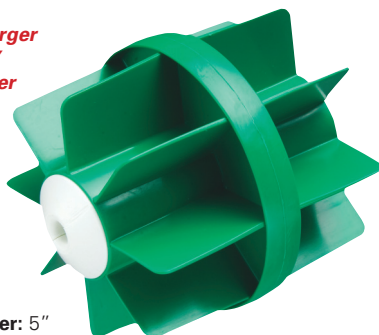
#### With Disconnects for Multiple Lengths

210526	25 M / 75 Ft	\$615.95
210552	50 M / 2 x 75 Ft	\$1,129.95

## Kiefer Wave Eater™ Racing Lanes

Best in the industry with 8 wave eating fins and the longest float length, maximizing the surface area for superior performance.

23% Larger  
than 4"  
diameter  
lanes!



Diameter: 5"

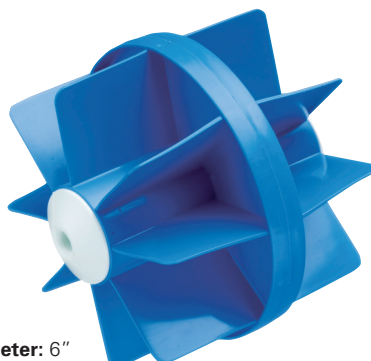
### Kiefer Wave Eater™ I

A smaller version of our highest performance lane makes legendary technology even more affordable. Length: 5.63"

210060	60 Ft	\$384.95	SALE!	\$364.95
210075	75 Ft	\$418.95	SALE!	\$397.95
210025	25 M	\$440.95	SALE!	\$418.95
210050	50 M	\$826.95	SALE!	\$784.95
210000	Ind. Floats	\$3.35		
210000C	Custom Length	Call For Quote		

#### With Disconnects for Multiple Lengths

210026	25 M / 75 Ft	\$576.95	SALE!	\$547.95
210052	50 M / 2 x 75 Ft	\$1,018.95	SALE!	\$967.95



Diameter: 6"

### Kiefer Wave Eater™ II

*Used in the 2011 USA Swimming Championships!*

Our premier lane, built to satisfy our founder's obsession with pushing athletic performance and achievement beyond all expectations. Length: 5.63"

210160	60 Ft	\$453.95	SALE!	\$429.95
210175	75 Ft	\$532.50	SALE!	\$505.95
210125	25 M	\$565.95	SALE!	\$536.95
210150	50 M	\$1,019.95	SALE!	\$968.95
210100	Ind. Floats	\$4.15		
210100C	Custom Length	Call For Quote		

#### With Disconnects for Multiple Lengths

210126	25 M / 75 Ft	\$679.95	SALE!	\$645.95
210152	50 M / 2 x 75 Ft	\$1,234.95	SALE!	\$1,172.95



Our storage reel protects your investment by extending the life of your racing lanes.



210300

### Racing Lane Storage Reel

*Often Imitated, But Never Equaled!*

Engineered for years of service. Strongest and most durable storage system available. Largest storage capacity on the market. Easy to maintain, highly durable, white powder coated T-304L stainless steel frame. Polyethylene discs and reel core.

Large casters with locking device make it easy to roll.

6 1/2' w x 5' d x 5' h.

Assembly required.

Ships via truck.

210300  
\$1,299.95

#### Storage Capacity Chart

Adv I WE I Adv II WE II

60'	8	8	5	5
75'	7	7	4	4
25m	6	6	4	4
50m	3	3	2	2



210301

### Storage Reel Cover

Protects racing lanes and storage reel from the elements. Heavy duty, reinforced cross link polyethylene. 6 1/2' w x 5' d x 5' h.

210301 \$123.95

### Racing Lane Parts

210218S	Take Up Reel	\$69.95
200202	5/8" x 9/16" Ratchet Wrench	
	Fits reel #200200 / 210218S	\$22.95
210219	Spring End Fitting	\$28.95
210220	2" Extension Hook	\$6.95
210221	8" Extension Hook	\$15.95
210222	14" Extension Hook	\$18.95
210223	18" Extension Hook	\$19.95
210237	24" Extension Hook	\$25.95
210232	32" Extension Hook	\$27.95

### Racing Lane Pre-Cut Cable

Vinyl coated type 316 stainless steel cable for added corrosion resistance.

210210	Cable Per Foot	\$1.15
210239	39.5' Pre-Cut Cable	\$19.95
210262	62' Pre-Cut Cable	\$32.95
210277	77' Pre-Cut Cable	\$38.50
210285	85' Pre-Cut Cable	\$42.50
210168	168' Pre-Cut Cable	\$83.95



Order 24 hours at [www.kiefer.com](http://www.kiefer.com) | Call **1-800-323-4071** • Mon. thru Fri. • 7:30am to 6:00pm CT

### 3-15 Safety / Rescue



### 16-41 Swim



### 42-47 Facility



Racing Lane  
**SALE!**

page 47